

HR

PINZE MULTIUSO

HEAVY DUTY GRABS

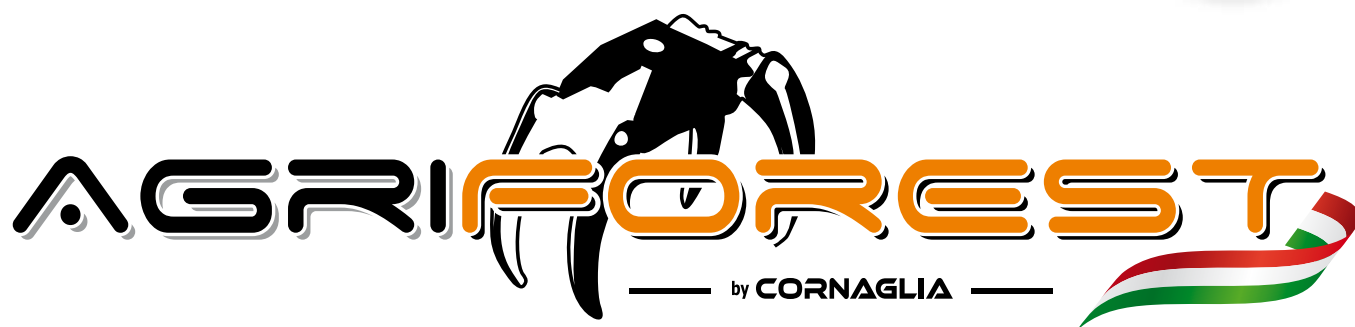
FOURCHES MULTI FONCTION

MULTIFUNKTIONSZANGE

PINZAS MULTIFUNCIÓN



C 05



YOUR PARTNER IN FORESTRY EXCELLENCE

PINZE MULTIUSO HEAVY DUTY GRABS

HR



Le pinze multiuso HR, ideali per applicazioni rigide, sono progettate per garantire prestazioni elevate anche nelle condizioni operative più impegnative, con la massima affidabilità e versatilità.

Le pinze HR sono disponibili in diverse versioni per escavatori da 2,0 a 16 ton, con apertura da 1000 mm a 1800 mm e superficie di carico da 0,13 a 0,38 m², per adattarsi a una vasta gamma di esigenze operative.

Le forche sono costruite in acciaio HB 450 o qualità simili e il resto in acciaio S 700, con perni in 39NiCrMo3 e boccole con bronzine, per assicurare massima robustezza, resistenza all'usura e agli urti.

La valvola di blocco sul cilindro, fornita di serie su ogni modello, garantisce maggiore sicurezza e protezione durante il lavoro.

HR multipurpose grabs, ideal for rigid applications, have been conceived to provide high performance even under the most demanding working conditions, ensuring maximum reliability and versatility.

HR grapples are available in different versions for excavator from 2.0 to 16.0 tons, with openings from 1000 mm to 1800 mm and loading areas from 0.13 to 0.38 m², to suit a wide range of operating requirements.

The tines are made of HB 450 steel or similar, the frame of S 700 steel, with 39NiCrMo3 pins and bushings bronzed, providing maximum strength, wear resistance, and impact toughness. The cylinder check valve, standard on every model, provides enhanced safety and protection during operation.

	HR 5 - 013	HR 5 - 015	HR 5 - 020	HR 7 - 020	HR 7 - 029	HR 7 - 038
ton	2,0 - 3,5	2,5 - 5,0	5,0 - 9,0	5,0 - 9,0	9,0 - 16,0	11,0 - 16,0
N.	3 + 2	3 + 2	3 + 2	4 + 3	4 + 3	4 + 3
Kg. (lb.)	1200 (2645.6)	1400 (3086.5)	3000 (6613.9)	3000 (6613.9)	5000 (11023.1)	6500 (14330.0)
Kg. (lb.)	95 (209.4)	115 (253.5)	189 (416.7)	215 (438.0)	340 (749.6)	450 (992.1)
mm (in)	1002 (39.4)	1002 (39.4)	1260 (49.6)	1260 (49.6)	1510 (59.4)	1760 (69.3)
m² (yd²)	0,13 (0.11)	0,13 (0.11)	0,20 (0.17)	0,20 (0.17)	0,29 (0.24)	0,38 (0.32)
MAX bar (psi)	230 (3336.0)	230 (3336.0)	250 (3626.0)	250 (3626.0)	250 (3626.0)	250 (3626.0)
lt. (gal)	20 (5.3)	20 (5.3)	30 (7.9)	30 (7.9)	40 (10.6)	60 (15.6)
mm (in)	651 (25.6)	651 (25.6)	808 (31.8)	808 (31.8)	936 (36.9)	1095 (43.1)
mm (in)	57 (2.2)	57 (2.2)	74 (2.9)	74 (2.9)	70 (2.8)	83 (3.3)
mm (in)	590 (23.2)	590 (23.2)	732 (28.8)	732 (28.8)	875 (34.4)	1025 (40.4)
mm (in)	438 (17.2)	438 (17.2)	541 (21.3)	541 (21.3)	593 (23.3)	692 (27.2)
A mm (in)	301 (11.9)	301 (11.9)	379 (14.9)	379 (14.9)	458 (18.0)	535 (21.1)
B mm (in)	598 (23.5)	598 (23.5)	741 (29.2)	741 (29.2)	857 (33.7)	1000 (39.4)
mm (in)	403 (15.9)	443 (17.4)	460 (18.1)	480 (18.9)	546 (21.5)	718 (28.3)



Le pinze multiuso HR possono avere 5 (3+2) o 7 (4+3) denti.

Progettate per applicazioni generiche, offrono una presa sicura su materiali di diverse dimensioni e un perfetto equilibrio tra leggerezza e resistenza.

Ideali anche per impieghi gravosi, assicurano una chiusura ottimale e una maggiore capacità di carico. Perfette per la movimentazione di legname di grandi dimensioni, pietre e materiali irregolari.



HR multipurpose grabs can have 5 (3+2) or 7 (4+3) tines.

Designed for multi-purpose applications, they offer a safe grip on materials of various sizes and an ideal balance between lightness and strength.

Perfect for heavy-duty operations, they ensure excellent clamping and higher loading capacity. Ideal for handling big size timber, stones and uneven materials.

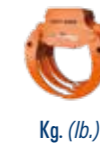


ROTATORE RIGIDO

HYDRAULIC INDUSTRIAL ROTATORS



ton



Kg. (lb.)



Kg. (lb.)



mm (in)

2,0 - 2,5	HR 5 - 013	SC 30	95 (209.4)	115 (253.5)	580 (22.38)
2,5 - 3,5	HR 5 - 013	SC 50	95 (209.4)	123 (271.2)	626 (24.65)
2,5 - 3,5	HR 5 - 015	SC 50	115 (253.5)	143 (315.3)	626 (24.65)
3,5 - 5,0	HR 5 - 015	SC 60	115 (253.5)	164 (361.6)	653 (25.07)
5,0 - 6,0	HR 5 - 020	SC 60	189 (416.7)	238 (524.7)	756 (29.76)
6,0 - 9,0	HR 5 - 020	SC 80	189 (416.7)	266 (586.4)	726 (28.58)
5,0 - 6,0	HR 7 - 020	SC 60	215 (474.0)	264 (582.0)	756 (29.76)
6,0 - 9,0	HR 7 - 020	SC 80	215 (474.0)	292 (643.7)	726 (28.58)
9,0 - 13,0	HR 7 - 029	SC 120	340 (749.6)	432 (952.4)	835 (32.87)
13,0 - 16,0	HR 7 - 029	SC 160	340 (749.6)	504 (1111.1)	865 (34.05)
11,0 - 16,0	HR 7 - 038	SC 160	450 (991.1)	614 (1353.6)	964 (37.95)

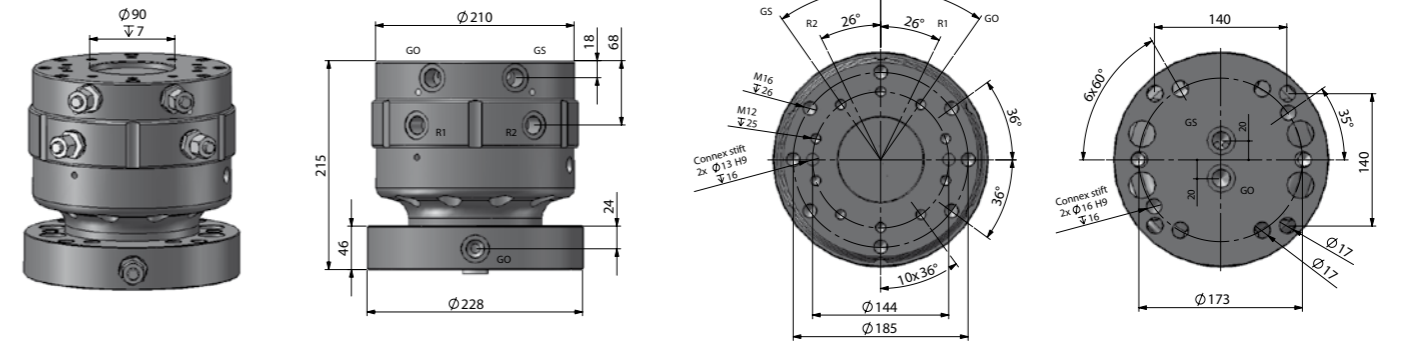
ROTATORI RIGIDI

HYDRAULIC INDUSTRIAL ROTATORS

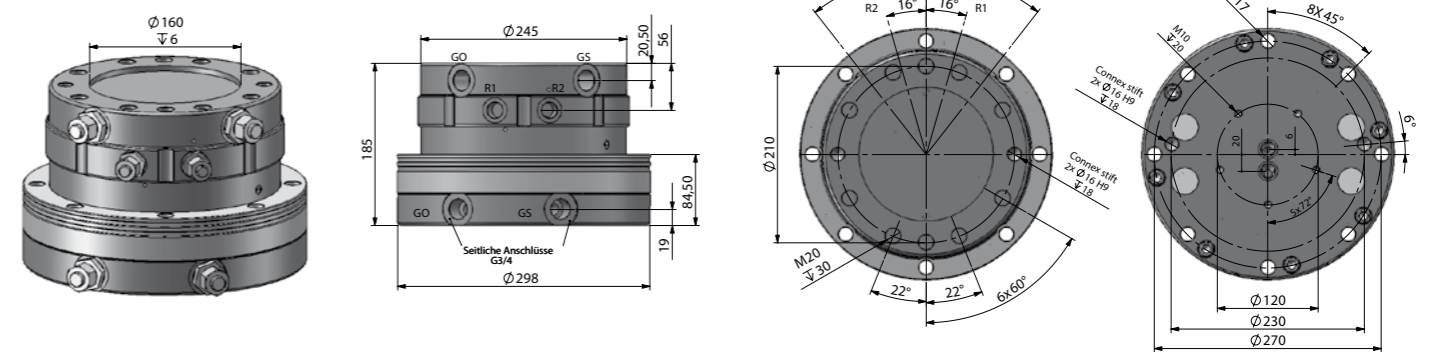


	Peso Weight Kg. (lb.)	MAX Carico assiale statico Load axial static	MAX Carico assiale dinamico Load axial dynamic	Ottimale Optimal lt. (gal)	320 bar Nm	MAX Montaggio rigido Rigid mounted ton	MAX Montaggio basculante Conn. with link ton
SC 30	20 (44.1)	35 KN	18 KN	25 (4.0)	1100	2,5	6
SC 50	28 (61.7)	50 KN	27 KN	25 (4.0)	1300	3,5	10
SC 60	49 (108.3)	130 KN	60 KN	25 (4.0)	2800	6	14
SC 80	77 (169.7)	180 KN	80 KN	25 (4.0)	3000	9	18
SC 120	92 (202.8)	280 KN	120 KN	25 (4.0)	3800	13	25
SC 160	164 (361.6)	380 KN	180 KN	25 (4.0)	3800	20	35

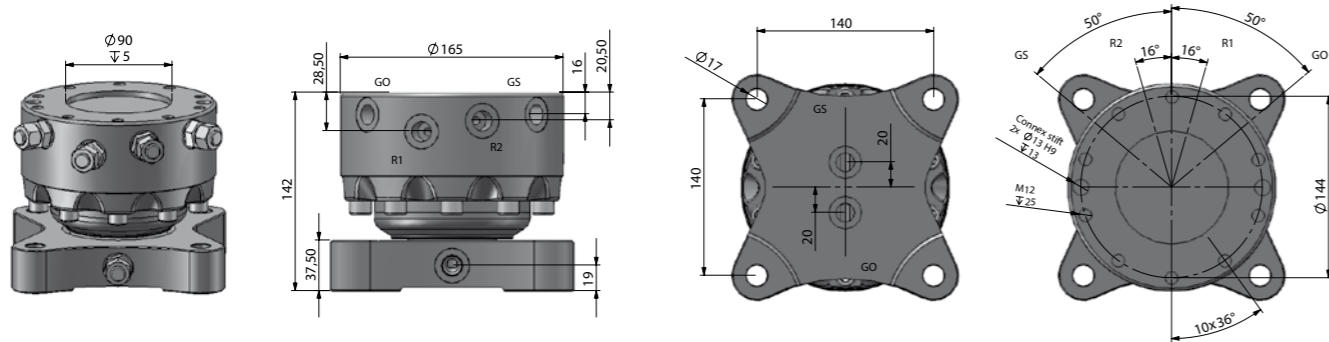
SC 60



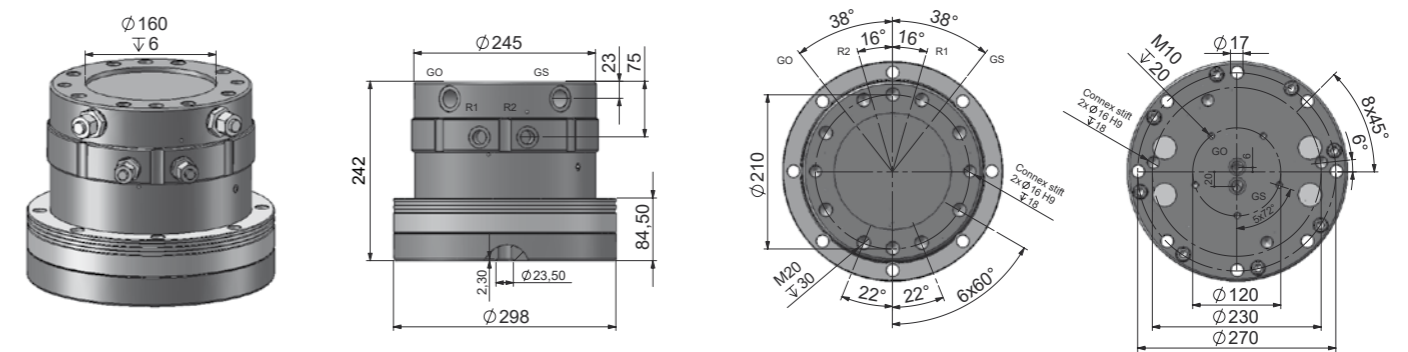
SC 80



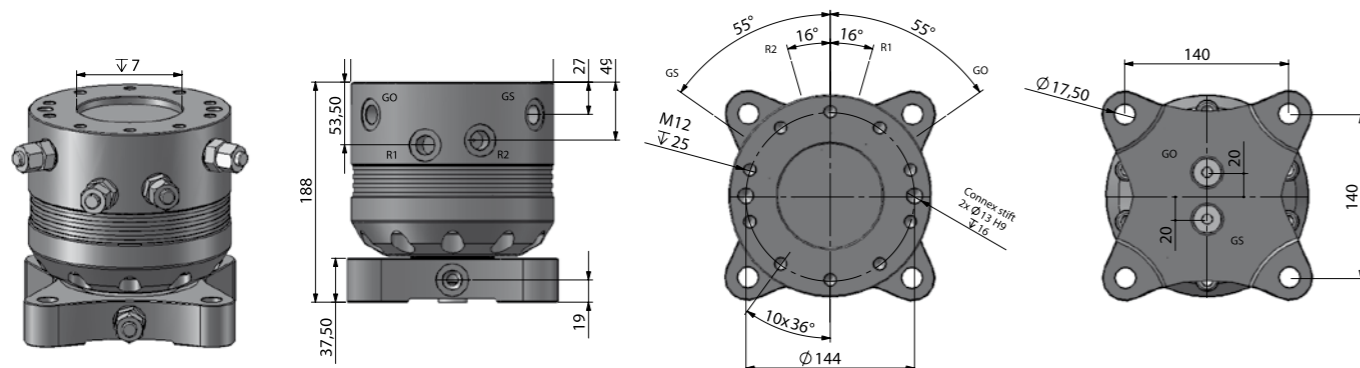
SC 30



SC 120



SC 50



SC 160

